

NEBULA



WHAT



IS

NEBULA?



REMOTE CONTROL



Available Devices:

	DV1 SN: 0000000000000000 Nome Dispositivo	
	ADK15 SN: 7777777777777777 New omap	
	CSH300A53-17 SN: CSH300A53-17	
	VeggoPlast SN: 10 VeggoPlast	
	Spagna SN: 11 Spagna	
	WD15-30 SN: 0000000000000000 New Omap	



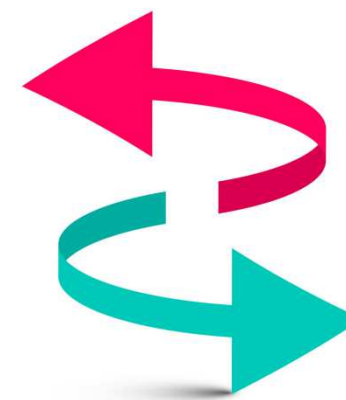
DATA HANDLING FOR SINGLE DRYER



WD15-30
New Omap
SN: 0000000000000000

The control panel interface consists of several elements:

- Two power buttons at the top: a green power button on the left and a red power button on the right.
- A material selection field with a molecular structure icon on the left, containing the text "ABS (ext)".
- A flow rate field with a gear icon on the left, containing the value "8.5" and the unit "Kg/h" on the right.
- A temperature field with a thermometer icon on the left, containing the value "74" and the unit "°C" on the right.
- A humidity field with a water droplet and thermometer icon on the left, containing the value "-16" and the unit "°C" on the right.
- A row of four status icons at the bottom: a calendar icon, a warning triangle icon, a warning triangle with a clock icon, and a red arrow pointing down icon.





Material treated



Hourly production



Process temperature



Dew point temperature



Weekly programmer



Alarm number



Alarm list



R.C.E. function



Back to settings



Log out



Data log



Taking notes



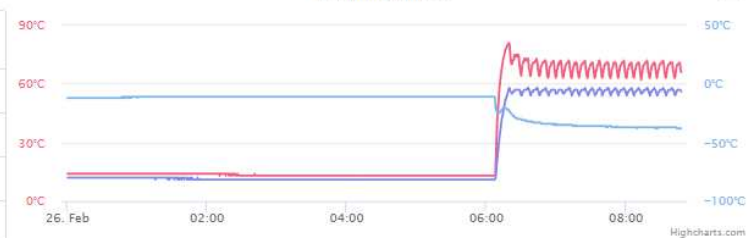
Device data:

NAME: WD15-30
New Omap
SN: 0000000000000000
4.0 SN: 345678
FW version: 298
SW version: 30
Type: 4
Per month prepaid service time (h):50
Prepaid service left: 50:00:00

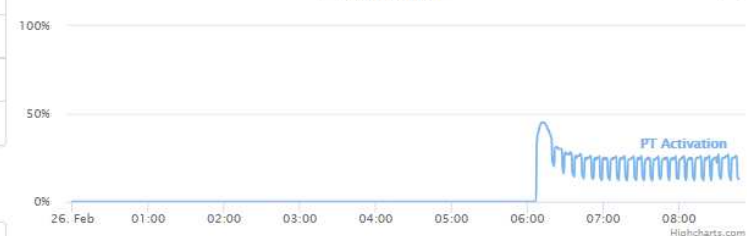
Actual state:

Power: 1
Alarm: 00
RT: 67
REG: 150
RAT: 44
RCE: 55
DP: -38
PT Activation: 25
REG Activation: 92
Timestamp: 2019-02-26 08:49:14

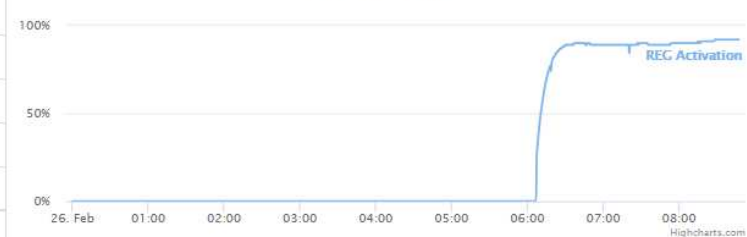
Temperatures



PT Activation



REG Activation





Nebula communication: the above slides can be seen



Ongoing alarm: associated with



Connection failure: the machine is not connected to the internet



Machine on service: associated with

